

57 Welsted Rd, DE74 2SN

£2,000 Per Month

Now available To Let this well-presented 4-bedroom detached property located on Welsted Road. Offering spacious and practical accommodation throughout, this home is ideal for modern family living.

The ground floor comprises a bright living room with double doors leading out to the garden, a separate office space, and a downstairs WC. The kitchen/diner features a central island along with integrated appliances including a fitted fridge freezer, dishwasher, and wine cooler. Double doors provide access to the rear garden, and there is also a separate utility room with space for a washing machine and tumble dryer.

Upstairs, the master bedroom benefits from fitted wardrobes and an en-suite shower room. The second and third bedrooms are both good-sized doubles, while the fourth bedroom also includes fitted wardrobes and still offers space for a double bed. A modern family bathroom completes the first floor.

Outside, the property benefits from an enclosed rear garden along with driveway parking and a garage. Complete with an eco-heating system and a Valiant air source heat pump.

Entrance Hall

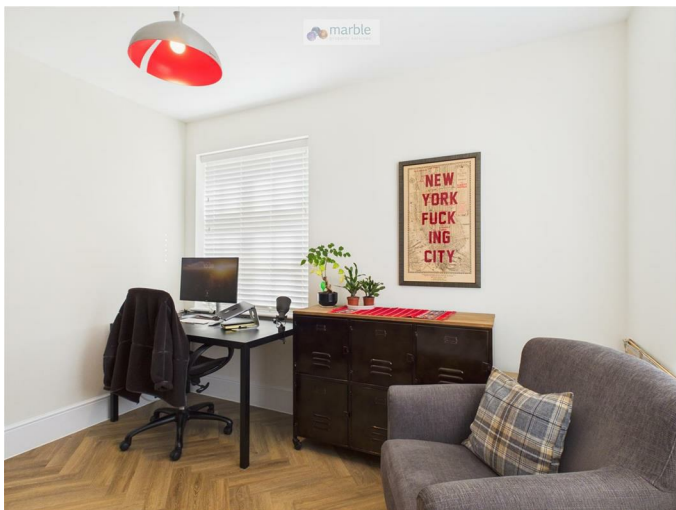
Accessed via a composite front door, the entrance hall features herringbone Amtico flooring with underfloor heating and provides access to the main ground floor accommodation and stairs rising to the first floor.

Living Room



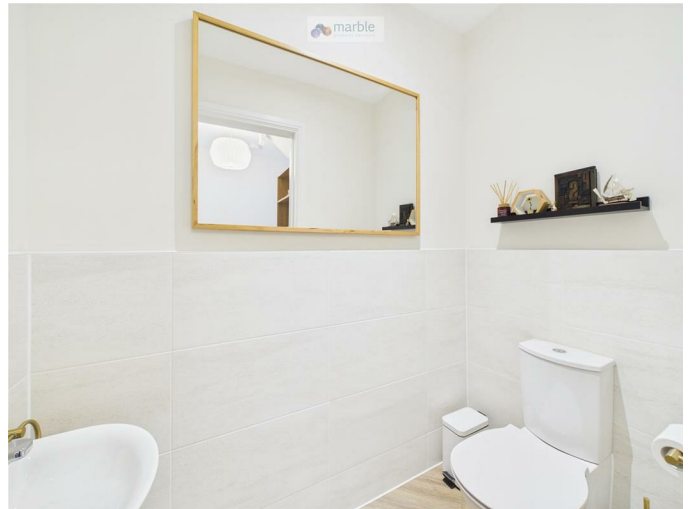
Carpeted living room with underfloor heating, front elevation window fitted with Venetian blinds, and double doors leading out to the rear garden.

Office/Snug



Versatile office/snug with herringbone Amtico flooring, underfloor heating, and front and side elevation windows fitted with Venetian blinds.

WC



Fitted with herringbone Amtico flooring and underfloor heating, comprising a low level WC, pedestal wash hand basin, and half tiled walls.

Kitchen/Diner



Fitted with a range of modern wall and base units with quartz effect work surfaces and matching quartz splashback. Feature island with seating area, inset charging point, slimline wine cooler, and pendant lighting over. Integrated appliances include a dishwasher, fridge freezer, grill, and high-level oven, along with a Siemens induction hob and extractor hood over. Inset ceramic sink with chrome mixer tap.

The room also benefits from two side elevation windows fitted with Venetian blinds, double doors leading to the rear garden, and herringbone Amtico flooring with underfloor heating throughout.

Utility

Continuing herringbone Amtico flooring with underfloor heating, fitted with work surfaces and

space for a washing machine and tumble dryer, along with additional storage and useful working space.

First Floor Landing

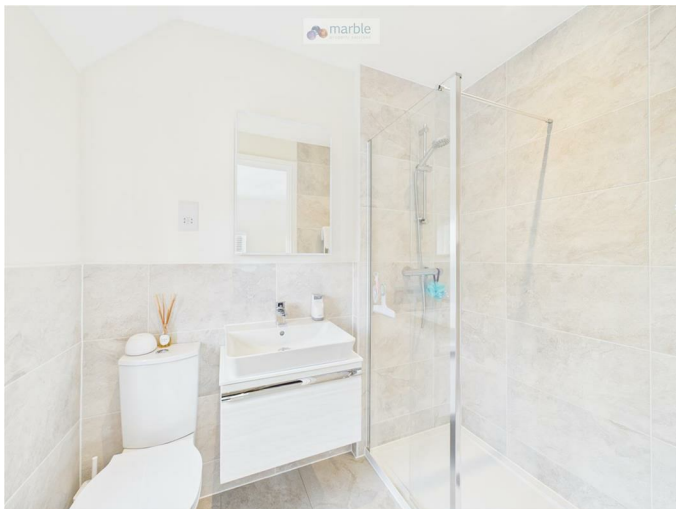
Carpeted flooring with access to all bedrooms and the family bathroom, along with a useful storage cupboard.

Master Bedroom



Spacious master bedroom with carpeted flooring, fitted wardrobes, and rear and side elevation windows fitted with Venetian blinds. Includes a radiator and access to the en-suite shower room.

En-Suite



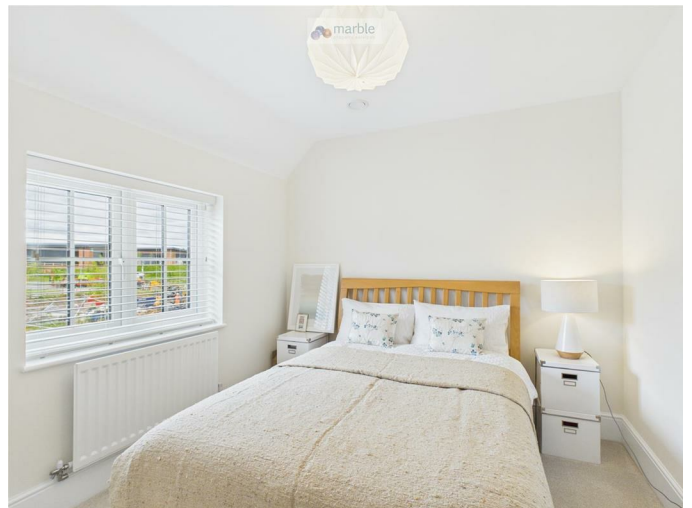
Comprising a fully tiled shower enclosure, WC, and vanity wash hand basin. Finished with a heated towel rail, wall-hung illuminated mirror, and a side elevation frosted window.

Bedroom 2



Spacious room with carpeted flooring and fitted wardrobes for storage. Rear and side elevation windows, both fitted with Venetian blinds. The room also includes a radiator.

Bedroom 3



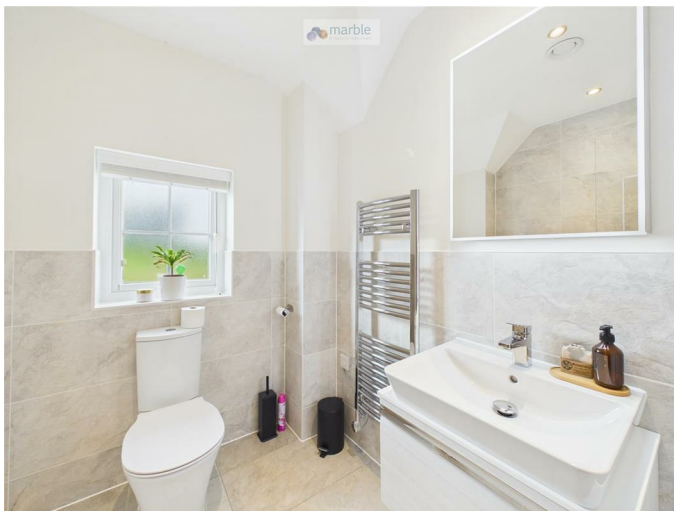
Double bedroom with carpeted flooring and front elevation window, fitted with Venetian blinds. The room also includes a radiator.

Bedroom 4



Double bedroom with carpeted flooring and a rear-facing window fitted with Venetian blinds. The room includes a radiator for heating and currently benefits from fitted wardrobes, making it ideal for use as a dressing room.

Family Bathroom



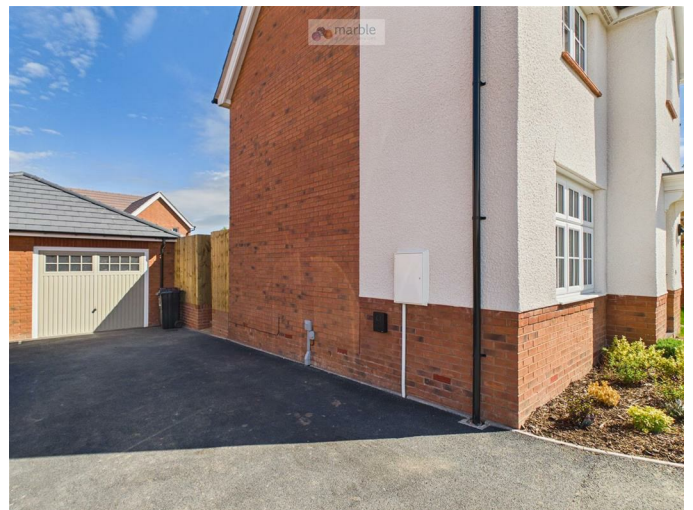
Finished to a modern standard this family bathroom comprises a panelled bath with shower over, WC and wash hand basin with fitted storage. The room is complemented by tiled walls and flooring. Additional features include a heated towel rail, light-up and heated wall-hung mirror and a frosted front elevation window.

Rear Garden



Accessed via double doors from the lounge or kitchen/diner and features a paved patio area, ideal for outdoor seating and entertaining. Beyond the patio is a generous grassed lawn, offering ample space for family use. The garden also benefits from a side gate providing access to the driveway and garage.

Driveway & Garage

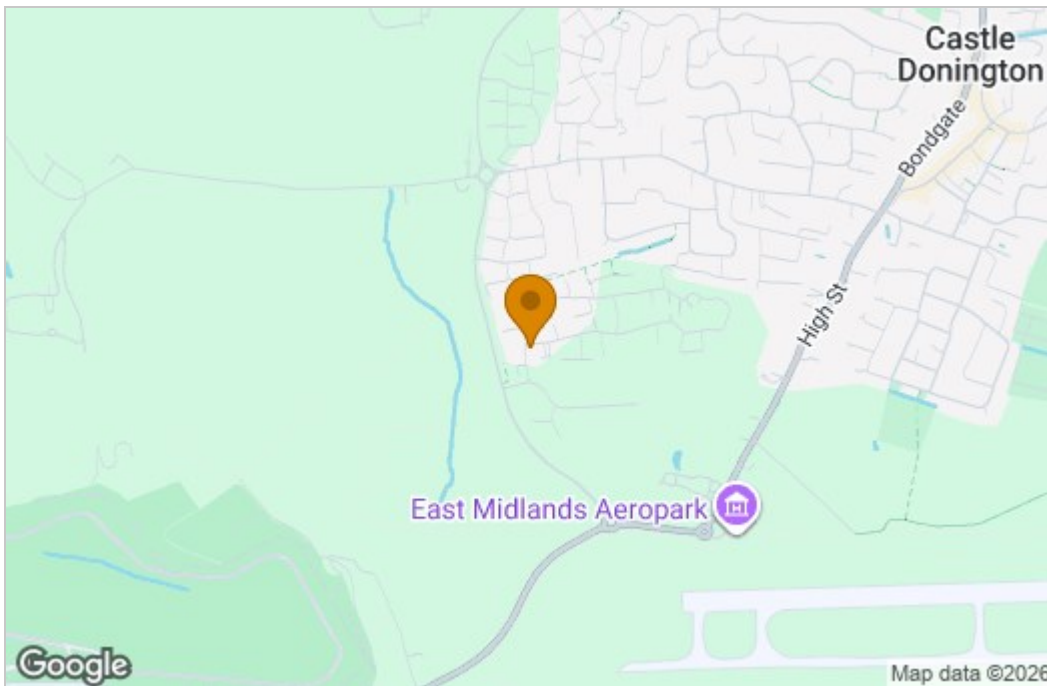


Located to the side of the property and provides a tandem driveway with off-road parking for at least two vehicles. The detached garage benefits from an up and over door, along with power and lighting, making it ideal for storage or workshop use.

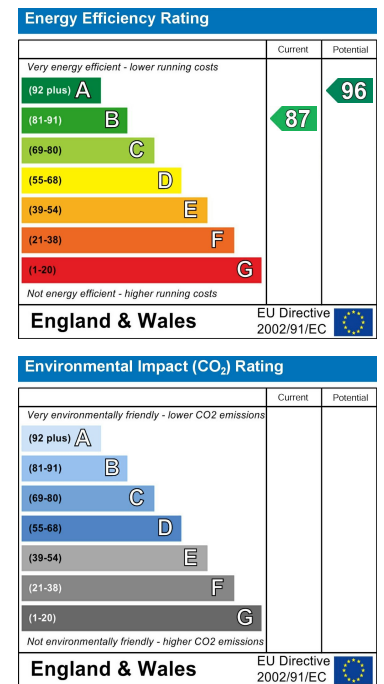
Floor Plan



Area Map



Energy Efficiency Graph



These particulars, whilst believed to be accurate are set out as a general outline only for guidance and do not constitute any part of an offer or contract. Intending purchasers should not rely on them as statements of representation of fact, but must satisfy themselves by inspection or otherwise as to their accuracy. No person in this firm's employment has the authority to make or give any representation or warranty in respect of the property.